

# 2024 RTD35

## STANDARD FEATURES

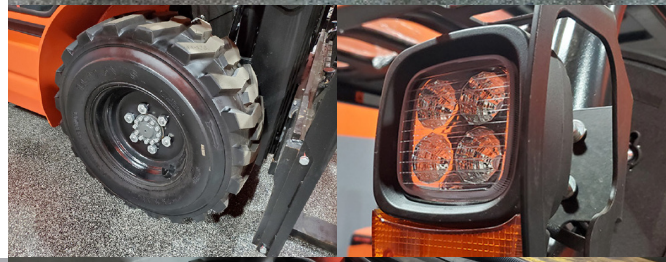
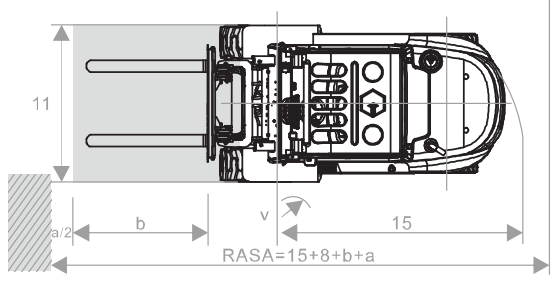
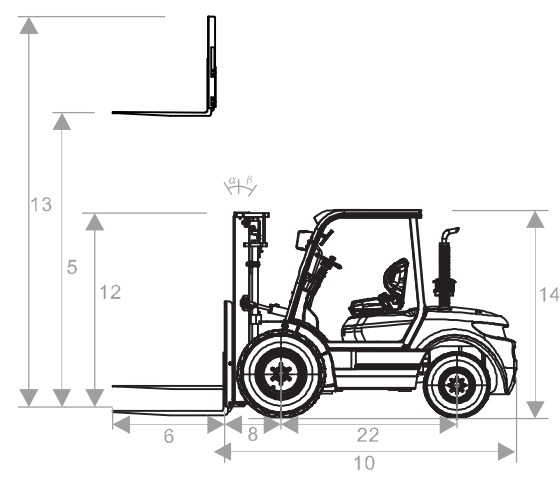
- 8,000lb Base Capacity
- 3 Stage Mast
- Full Free Lift
- 92" Lowered Mast Height
- 189" Max Raised Fork Height
- Premium Air Pneumatic tires
- EPA Tier 4 Final Diesel Engine
- Backup Alarm
- Rear View Mirrors
- LED Front and Rear Lights
- Integrated LED Turn Signals
- Tilt Steering Column
- Pre Air Cleaner
- Digital Systems Monitor Display
- Rubber Floor mat
- Load Backrest
- 3 Way Hydraulics Plumbed to Carriage
- 12mo/2000hr Manufacturer Warranty



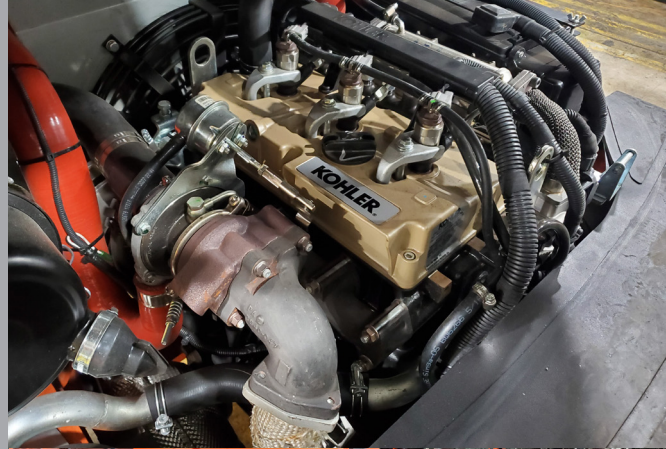
# 2024 RTD35

## SPECIFICATIONS

POWER TYPE	<b>DIESEL</b>
BASE CAPACITY	<b>8000 LBS</b>
CAPACITY 24" LC @189"	<b>5400 LBS</b>
SERVICE WEIGHT	<b>13000 LBS</b>
TIRE SIZE (FRONT)	<b>14-17.5-14PR</b>
TIRE SIZE (REAR)	<b>27X10-12-12PR</b>
WHEELBASE	<b>7.25"</b>
MAST TILT ANGLE (F/R)	<b>8/10</b>
LIFT HEIGHT (3 STAGE)	<b>189"</b>
LOWERED HEIGHT	<b>92"</b>
FREE LIFT	<b>73"</b>
LENGTH (LESS FORKS)	<b>124"</b>
WIDTH	<b>63"</b>
HEIGHT TO OVERHEAD GUARD	<b>91"</b>
TURNING RADIUS	<b>110.5"</b>
GROUND CLEARANCE	<b>9"</b>
MAX GRADABILITY	<b>20%</b>
TRANSMISSION	<b>AUTO</b>
TRANSMISSION SPEEDS	<b>1 FWD / 1 RVS</b>



Engine model may vary



# 2024

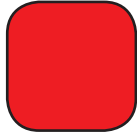
# RTD35

## PICK YOUR COLOR!

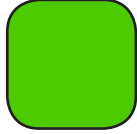
**ORANGE**



**RED**



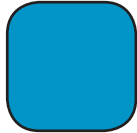
**GREEN**



**ACID GREEN**



**SKY BLUE**



**ROYAL BLUE**



**SILVER**



**FROST GREY**



WWW.VIPERLIFTTRUCKS.COM

### FACTORY INSTALLED OPTIONS\*

SIDE SHIFTER

SIDE SHIFT FORK POSITIONER

FULL SUSPENSION SEAT

CAB W/HEAT, WIPERS, LED LIGHTS

AIR CONDITIONING

FIRE EXTINGUISHER

STROBE LIGHT

REAR WORK LIGHT

4TH VALVE, LEVER AND HOSE

REAR HORN HANDLE/BUTTON

EATON STEERING



**EXTENDED WARRANTIES AVAILABLE  
INQUIRE WITH YOUR REPRESENTATIVE  
FOR FURTHER DETAILS**





VIPER

VIPER  
LIFT TRUCKS

25

VIPER

OIL FILTER

VIPER  
LIFT TRUCKS  
GENUINE PARTS

VIPER  
LIFT TRUCKS

GENUINE PARTS

VIPER  
LIFT TRUCKS

GENUINE PARTS

VIPER  
LIFT TRUCKS

GENUINE PARTS