

2024

FB15

STANDARD FEATURES

- 3,000lb Base Capacity
- 3 Stage Mast
- Full Free Lift
- 83" Lowered Mast Height
- 189" Max Raised Fork Height
- Premium Air Pneumatic tires
- 48V Electric Battery Powered
- Curtis Controller
- Backup Alarm
- Rear View Mirrors
- LED Front and Rear Lights
- Integrated LED Turn Signals
- Tilt Steering Column
- Twin USB Power Ports for Electric personal or Business Devices
- Digital Systems Monitor Display
- Rubber Floor mat
- Load Backrest
- 3 Way Hydraulics Plumbed to Carriage
- 12mo/2000hr Manufacturer Warranty

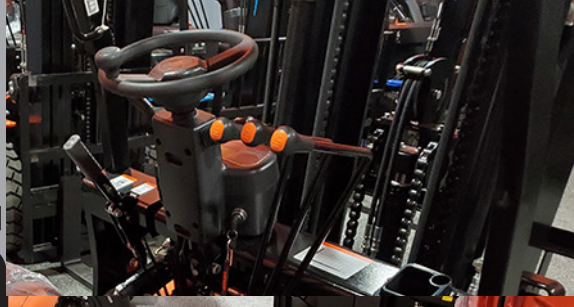


2024

FB15

SPECIFICATIONS

| | |
|--------------------------|----------------------|
| POWER TYPE | 48V BATTERY |
| BASE CAPACITY | 3000 LBS |
| CAPACITY 24" LC @189" | 2600 LBS |
| SERVICE WEIGHT | 7790 LBS |
| TIRE SIZE (FRONT) | 6.50-10 |
| TIRE SIZE (REAR) | 5.00-8 |
| WHEELBASE | 56" |
| MAST TILT ANGLE (F/R) | 6/12 |
| LIFT HEIGHT (3 STAGE) | 189" |
| LOWERED HEIGHT | 83" |
| FREE LIFT | 73" |
| LENGTH (LESS FORKS) | 86" |
| WIDTH | 43" |
| HEIGHT TO OVERHEAD GUARD | 86.4" |
| TURNING RADIUS | 79" |
| GROUND CLEARANCE | 4.33" |
| MAX GRADABILITY | 15% |
| TRANSMISSION | AUTO |
| TRANSMISSION SPEEDS | 1 FWD / 1 RVS |



2024

FB15

PICK YOUR COLOR!

ORANGE



RED



GREEN



ACID GREEN



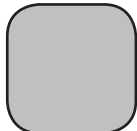
SKY BLUE



ROYAL BLUE



SILVER



FROST GREY



FACTORY INSTALLED OPTIONS*

SOLID TIRES (4)

SIDE SHIFTER

SIDE SHIFT FORK POSITIONER

DUAL DRIVE W/WIDE CARRIAGE

FULL SUSPENSION SEAT

CAB W/HEAT, WIPERS, LED LIGHTS

AIR CONDITIONING

FIRE EXTINGUISHER

STROBE LIGHT

REAR WORK LIGHT

4TH VALVE, LEVER AND HOISING

REAR HORN HANDLE/BUTTON

EATON STEERING



**EXTENDED WARRANTIES AVAILABLE
INQUIRE WITH YOUR REPRESENTATIVE
FOR FURTHER DETAILS**

VIPER
LIFT TRUCKS

WWW.VIPERLIFTTRUCKS.COM